

GENERAL NOTES:

- A. ALL 15A20A RECEPTACLES IN KITCHENS, FOOD PREP AREAS, RESTROOMS, OR ON EXTERIOR SHALL BE GFCI TYPE. GFCI RECEPTACLES SHALL BE INSTALLED IN ACCORDANCE WITH 2009 NEC ARTICLE 210.8 AND BE READILY ACCESSIBLE. FOR EQUIPMENT THAT WOULD HAVE TO BE MOVED TO RESET THE RECEPTACLE PER THE NEC DEFINITION, A GFCI BREAKER SHALL BE UTILIZED IN LIEU OF A RECEPTACLE.
- B. COORDINATE WITH OWNER/ARCHITECT ON DEVICE PLATE COLOR THROUGHOUT SUITE PRIOR TO PURCHASE OR INSTALLATION. CONFIRM ALL MOUNTING HEIGHTS AND LOCATIONS.
- C. SEE FIRE ALARM GENERAL NOTES ON SHEET E001 FOR FURTHER REQUIREMENTS. INTEGRATE NEW DEVICES SHOWN INTO FIRE ALARM SYSTEM. UPGRADE OR REPLACE EXISTING SYSTEM AS REQUIRED.
- D. SEE TAMPERPROOF RECEPTACLE NOTES ON SHEET E001 AND PROVIDE AS REQUIRED BY CODE. TAMPERPROOF RECEPTACLES ARE NOT NOTED ON THE FLOOR PLANS.

KEY NOTES:

1/ xxx

STIPULATION FOR REUSE: THIS DRAWING WAS PREPARED FOR USE ON A SPECIFIC SITE AT DULUTH, GA CONTEMPORANEOUSLY WITH ITS ISSUE DATE AS NOTED BELOW. AND IT IS NOT SUITABLE FOR USE ON A DIFFERENT PROJECT SITE OR AT A LATER TIME. USE OF THIS DRAWING FOR ANOTHER PROJECT REQUIRES THE SERVICES OF PROPERLY LICENSED ARCHITECTS AND ENGINEERS. REPRODUCTION OF THIS DRAWING FOR REUSE ON ANOTHER PROJECT IS NOT AUTHORIZED AND MAY BE CONTRARY TO THE LAW.



CONSULTANTS:
bes
 Beach Engineering Solutions Team
 Mechanical, Electrical & Plumbing Engineering
 (678) 665-3280
 Project Number: 23-547

THE STRICKLANDER
 MARRIOTT AUTOGRAPH
 PUBLIC SPACE
 6405 SUGARLOAF PARKWAY
 DULUTH, GEORGIA 30097

INTERIM REVIEW
 NOT FOR
 REGULATORY
 APPROVAL,
 PERMITTING OR
 CONSTRUCTION

ISSUE BLOCK:

DOCUMENT DATE: 04/02/2026

DRAWN BY:

CHECKED BY:

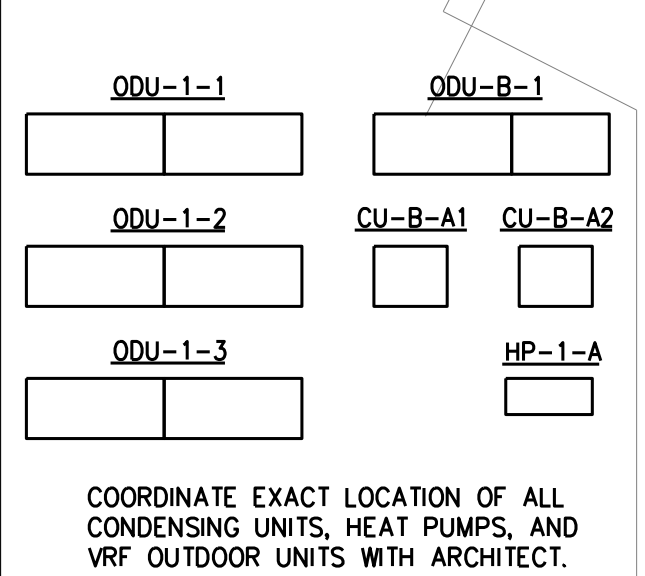
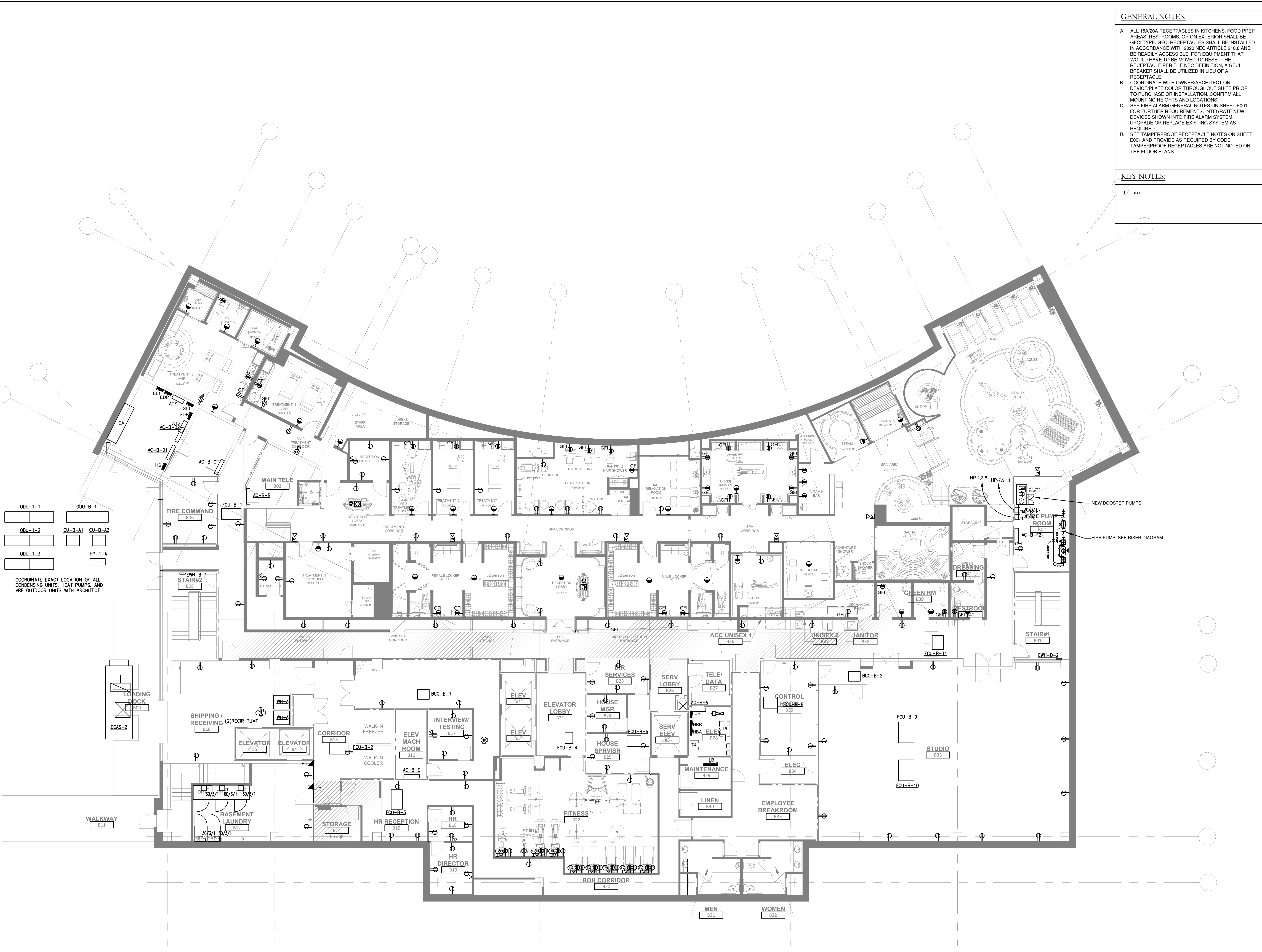
PROJECT NO.: JHD-024-NA-100002

SHEET TITLE:

ELECTRICAL
 OVERALL FLOOR
 PLAN -
 BASEMENT

SHEET NUMBER:

E-200



1 ELECTRICAL OVERALL FLOOR PLAN - BASEMENT
 SCALE: 1/8" = 1'-0"