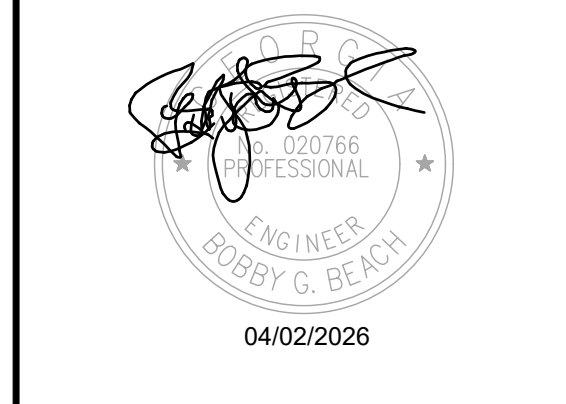


STIPULATION FOR REUSE:  
 THIS DRAWING WAS PREPARED FOR USE ON A SPECIFIC SITE AT DULUTH, GA CONTEMPORANEOUSLY WITH ITS ISSUE DATE AS NOTED BELOW, AND IT IS NOT SUITABLE FOR USE ON A DIFFERENT PROJECT SITE OR AT A LATER TIME. USE OF THIS DRAWING FOR REFERENCE OR EXAMPLE ON ANOTHER PROJECT REQUIRES THE SERVICES OF PROPERLY LICENSED ARCHITECTS AND ENGINEERS. REPRODUCTION OF THIS DRAWING FOR REUSE ON ANOTHER PROJECT IS NOT AUTHORIZED AND MAY BE CONTRARY TO THE LAW.



CONSULTANTS:  
**Beach Engineering Solutions Team**  
 Mechanical, Electrical & Plumbing Engineering  
 (678) 665-3280  
 Project Number: 23-547

**THE STRICKLANDER**  
**MARRIOTT AUTOGRAPH**  
**GUESTROOMS**  
 6405 SUGARLOAF PARKWAY  
 DULUTH, GEORGIA 30097



ISSUE BLOCK:

1	REV 1	11.22.2024
2	REV 2	04.07.2025
3	REV 3	04.18.2025
4	REV 4	05.28.2025
5	REV 5	04.02.2026

DOCUMENT DATE: 04/02/26

DRAWN BY: CL/LYC

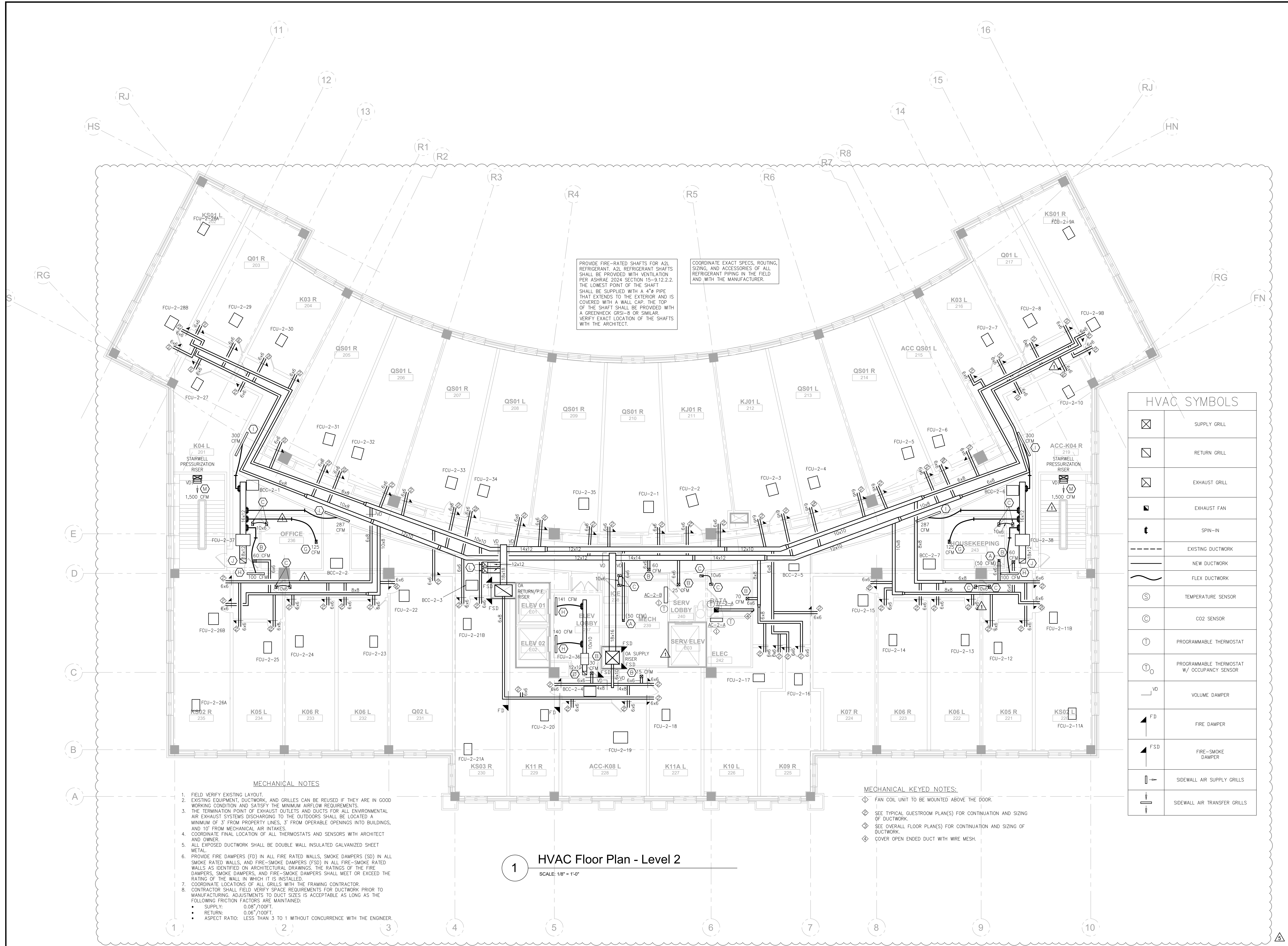
CHECKED BY: BGB

PROJECT NO.: JHD-024-NA-100001

SHEET TITLE:

**HVAC FLOOR PLAN - LEVEL 2**

SHEET NUMBER:  
**M-203**



PROVIDE FIRE-RATED SHAFTS FOR A2L REFRIGERANT. A2L REFRIGERANT SHAFTS SHALL BE PROVIDED WITH VENTILATION PER ASHRAE 2024 SECTION 15-9.12.2.2. THE LOWEST POINT OF THE SHAFT SHALL BE SUPPLIED WITH A 4" PIPE THAT EXTENDS TO THE EXTERIOR AND IS COVERED WITH A WALL CAP. THE TOP OF THE SHAFT SHALL BE PROVIDED WITH A GREENHECK GRSI-B OR SIMILAR. VERIFY EXACT LOCATION OF THE SHAFTS WITH THE ARCHITECT.

COORDINATE EXACT SPECS, ROUTING, SIZING, AND ACCESSORIES OF ALL REFRIGERANT PIPING IN THE FIELD AND WITH THE MANUFACTURER.

HVAC SYMBOLS

	SUPPLY GRILLE
	RETURN GRILLE
	EXHAUST GRILLE
	EXHAUST FAN
	SPIN-IN
	EXISTING DUCTWORK
	NEW DUCTWORK
	FLEX DUCTWORK
	TEMPERATURE SENSOR
	CO2 SENSOR
	PROGRAMMABLE THERMOSTAT
	PROGRAMMABLE THERMOSTAT W/ OCCUPANCY SENSOR
	VOLUME DAMPER
	FIRE DAMPER
	FIRE-SMOKE DAMPER
	SIDEWALL AIR SUPPLY GRILLS
	SIDEWALL AIR TRANSFER GRILLS

- MECHANICAL NOTES:**
- FIELD VERIFY EXISTING LAYOUT.
  - EXISTING EQUIPMENT, DUCTWORK, AND GRILLES CAN BE REUSED IF THEY ARE IN GOOD WORKING CONDITION AND SATISFY THE MINIMUM AIRFLOW REQUIREMENTS.
  - THE TERMINATION POINT OF EXHAUST OUTLETS AND DUCTS FOR ALL ENVIRONMENTAL AIR EXHAUST SYSTEMS DISCHARGING TO THE OUTDOORS SHALL BE LOCATED A MINIMUM OF 3' FROM PROPERTY LINES, 3' FROM OPERABLE OPENINGS INTO BUILDINGS, AND 10' FROM MECHANICAL AIR INTAKES.
  - COORDINATE FINAL LOCATION OF ALL THERMOSTATS AND SENSORS WITH ARCHITECT AND OWNER.
  - ALL EXPOSED DUCTWORK SHALL BE DOUBLE WALL INSULATED GALVANIZED SHEET METAL.
  - PROVIDE FIRE DAMPERS (FD) IN ALL FIRE RATED WALLS, SMOKE DAMPERS (SD) IN ALL SMOKE RATED WALLS, AND FIRE-SMOKE DAMPERS (FSD) IN ALL FIRE-SMOKE RATED WALLS AS IDENTIFIED ON ARCHITECTURAL DRAWINGS. THE RATINGS OF THE FIRE DAMPERS, SMOKE DAMPERS, AND FIRE-SMOKE DAMPERS SHALL MEET OR EXCEED THE RATING OF THE WALL IN WHICH IT IS INSTALLED.
  - COORDINATE LOCATIONS OF ALL GRILLES WITH THE FRAMING CONTRACTOR.
  - CONTRACTOR SHALL FIELD VERIFY SPACE REQUIREMENTS FOR DUCTWORK PRIOR TO MANUFACTURING. ADJUSTMENTS TO DUCT SIZES IS ACCEPTABLE AS LONG AS THE FOLLOWING FRICTION FACTORS ARE MAINTAINED:
    - SUPPLY: 0.08"/100FT.
    - RETURN: 0.06"/100FT.
    - ASPECT RATIO: LESS THAN 3 TO 1 WITHOUT CONCURRENCE WITH THE ENGINEER.

- MECHANICAL KEYED NOTES:**
- FAN COIL UNIT TO BE MOUNTED ABOVE THE DOOR.
  - SEE TYPICAL GUESTROOM PLAN(S) FOR CONTINUATION AND SIZING OF DUCTWORK.
  - SEE OVERALL FLOOR PLAN(S) FOR CONTINUATION AND SIZING OF DUCTWORK.
  - COVER OPEN ENDED DUCT WITH WIRE MESH.

**1 HVAC Floor Plan - Level 2**  
 SCALE: 1/8" = 1'-0"