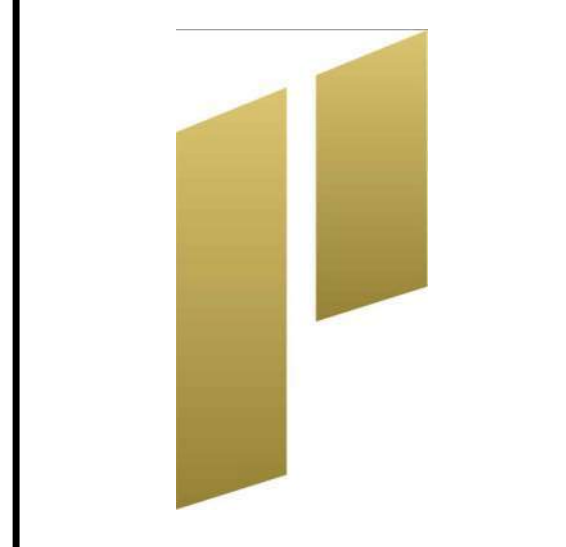
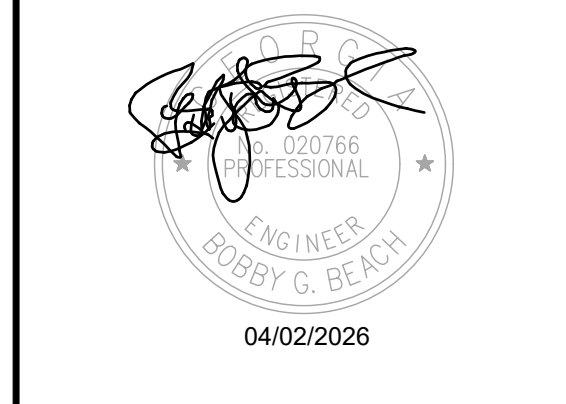


STIPULATION FOR REUSE:  
 THIS DRAWING WAS PREPARED FOR USE ON A SPECIFIC SITE AT DULUTH, GA CONTEMPORANEOUSLY WITH ITS ISSUE DATE AS NOTED BELOW, AND IT IS NOT SUITABLE FOR USE ON A DIFFERENT PROJECT SITE OR AT A LATER TIME. USE OF THIS DRAWING FOR REFERENCE OR EXAMPLE ON ANOTHER PROJECT REQUIRES THE SERVICES OF PROPERLY LICENSED ARCHITECTS AND ENGINEERS. REPRODUCTION OF THIS DRAWING FOR REUSE ON ANOTHER PROJECT IS NOT AUTHORIZED AND MAY BE CONTRARY TO THE LAW.



CONSULTANTS:  
**Beach Engineering Solutions Team**  
 Mechanical, Electrical & Plumbing Engineering  
 (678) 665-3280  
 Project Number: 23-547

**THE STRICKLANDER**  
**MARRIOTT AUTOGRAPH**  
**GUESTROOMS**  
 6405 SUGARLOAF PARKWAY  
 DULUTH, GEORGIA 30097

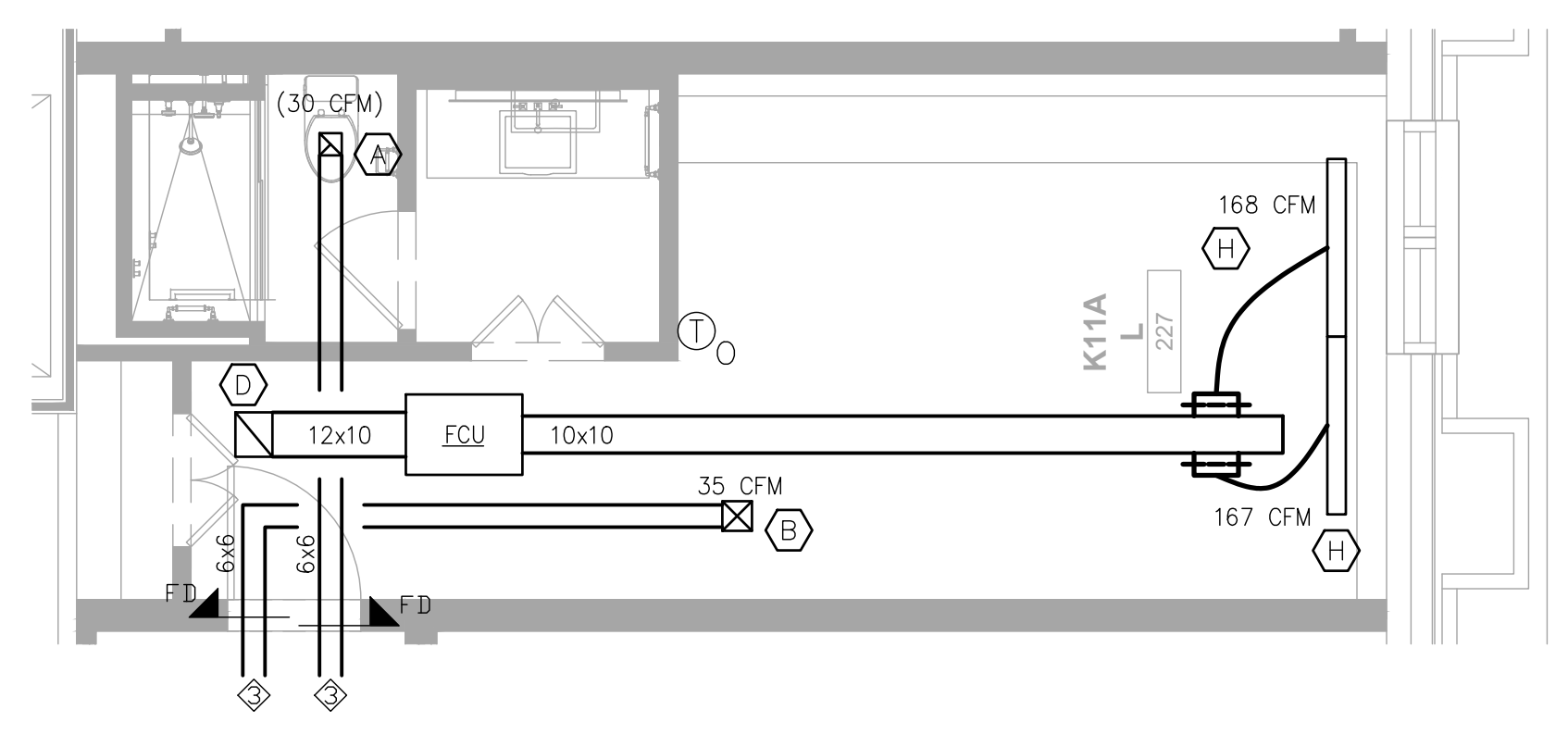


ISSUE BLOCK:

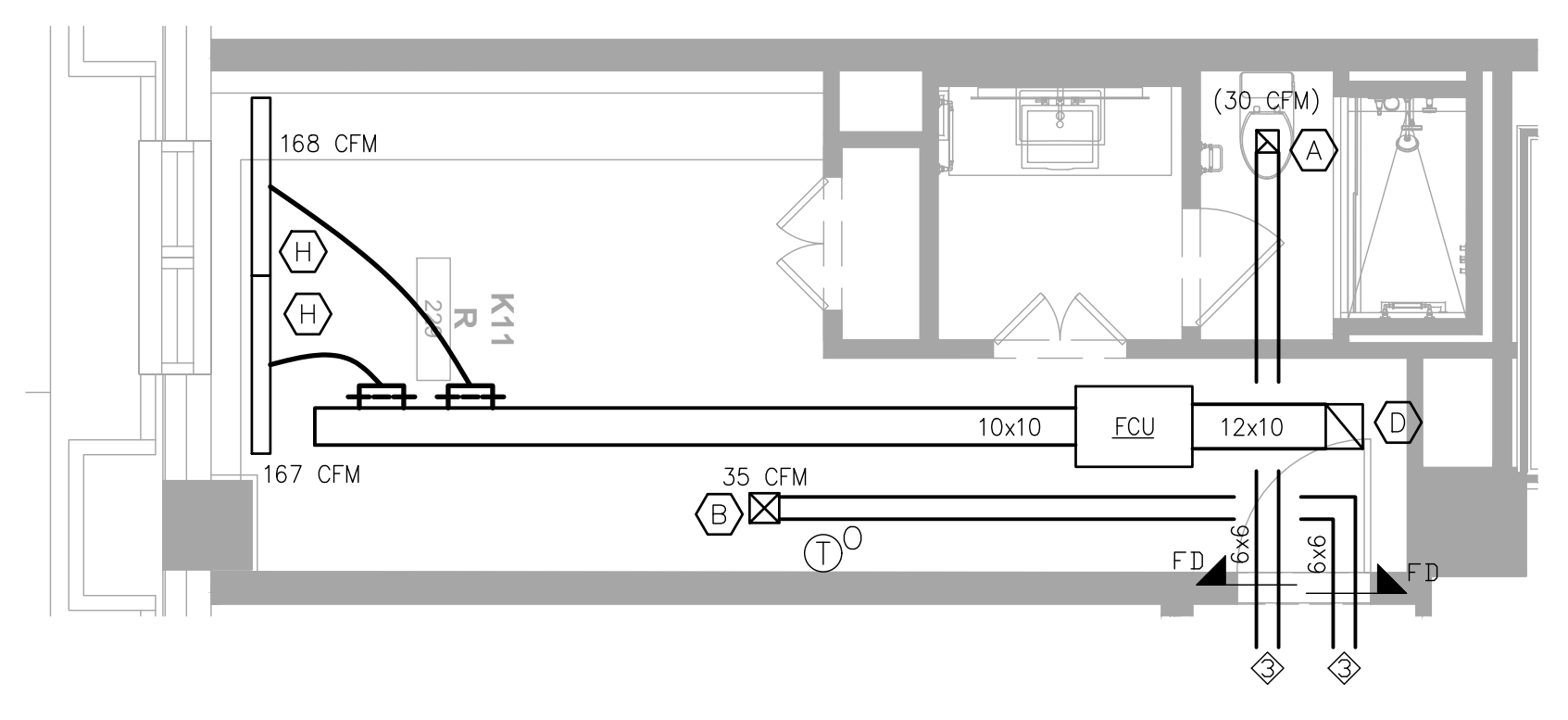
|   |       |            |
|---|-------|------------|
| 1 | REV 1 | 11.22.2024 |
| 2 | REV 2 | 04.07.2025 |
| 3 | REV 3 | 04.18.2025 |
| 4 | REV 4 | 05.28.2025 |
| 5 | REV 5 | 04.02.2026 |

DOCUMENT DATE: 04/02/26  
 DRAWN BY: CL/YC  
 CHECKED BY: BGB  
 PROJECT NO.: JHD-024-NA-100001  
 SHEET TITLE:

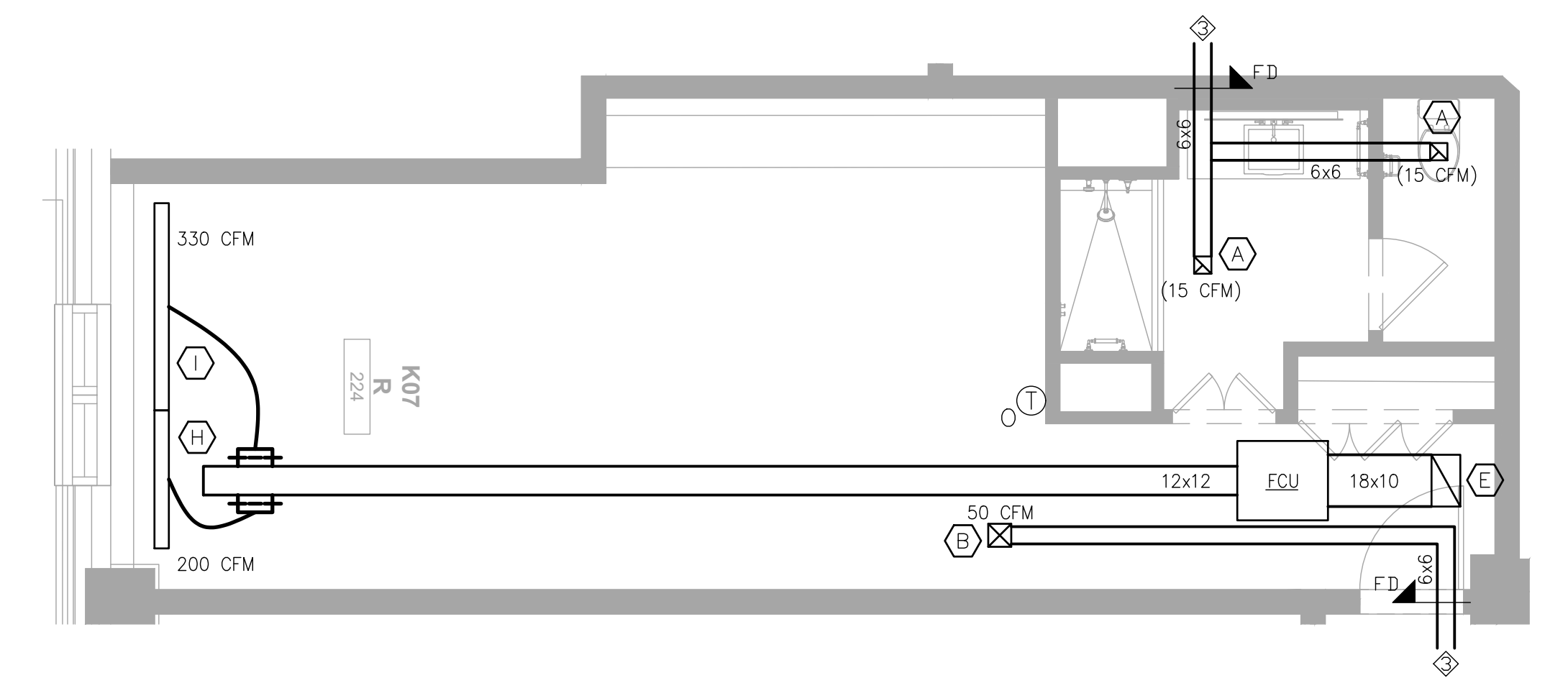
**HVAC TYPICAL GUESTROOM PLANS**  
 SHEET NUMBER:  
**M-302**



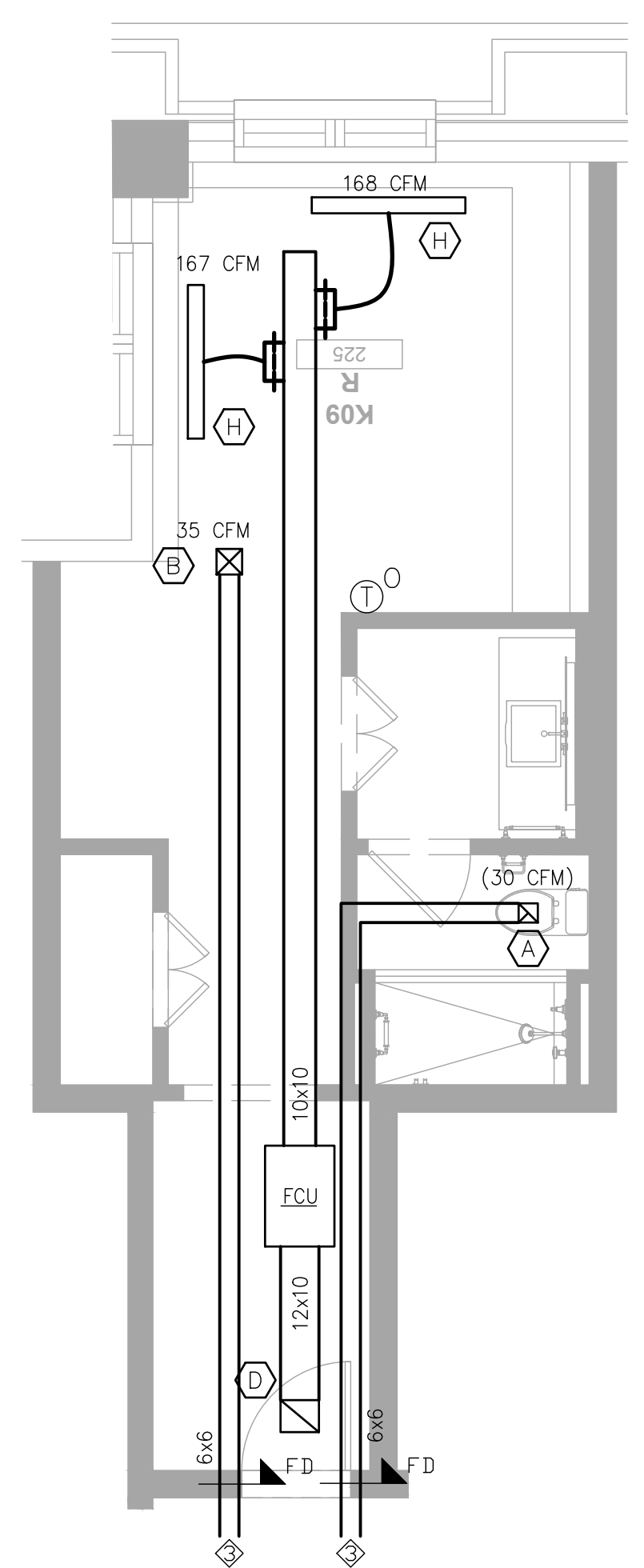
**1 K11L Typical Guestroom Plan**  
 SCALE: 1/4" = 1'-0"



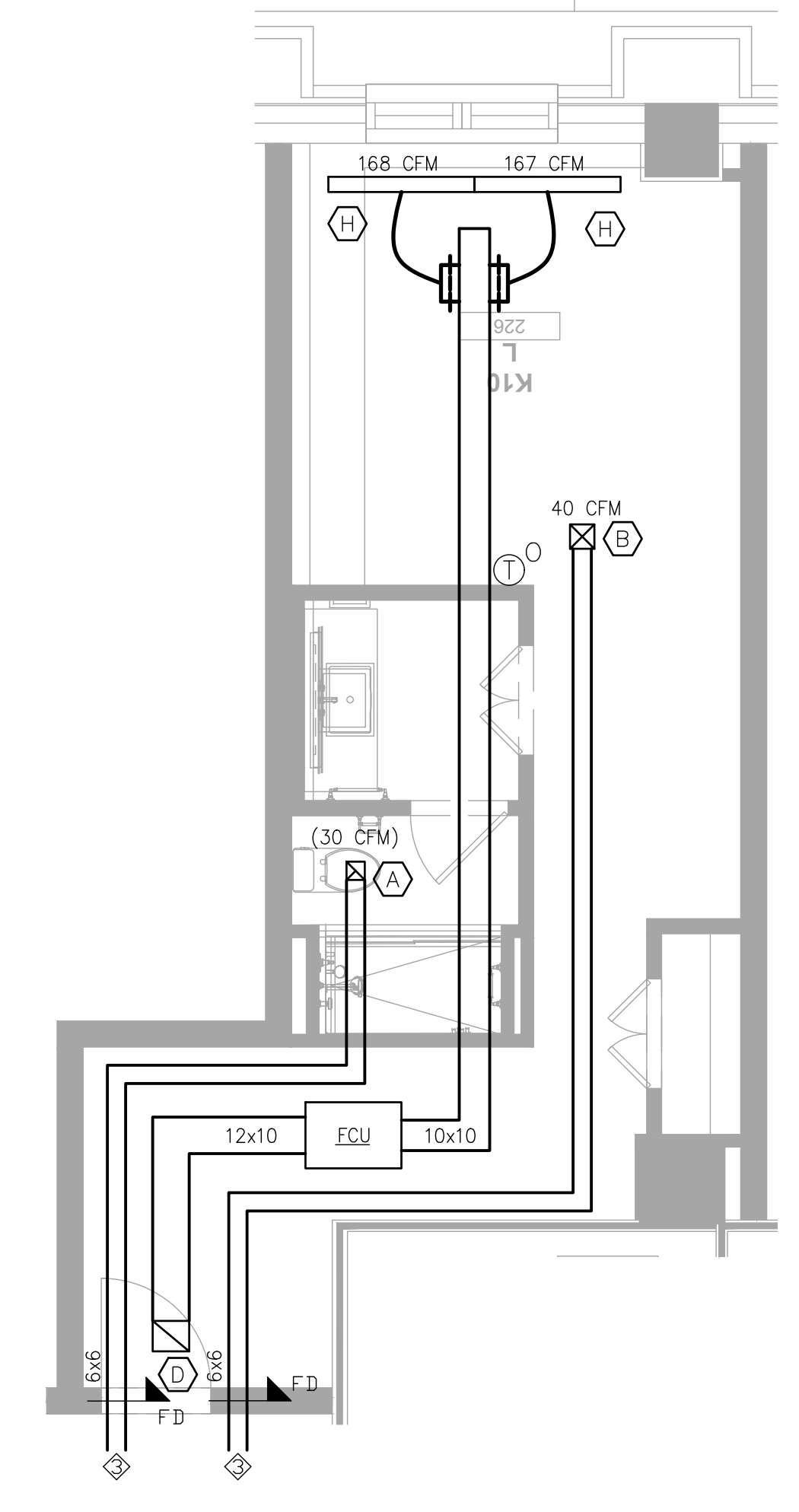
**2 K11R Typical Guestroom Plan**  
 SCALE: 1/4" = 1'-0"



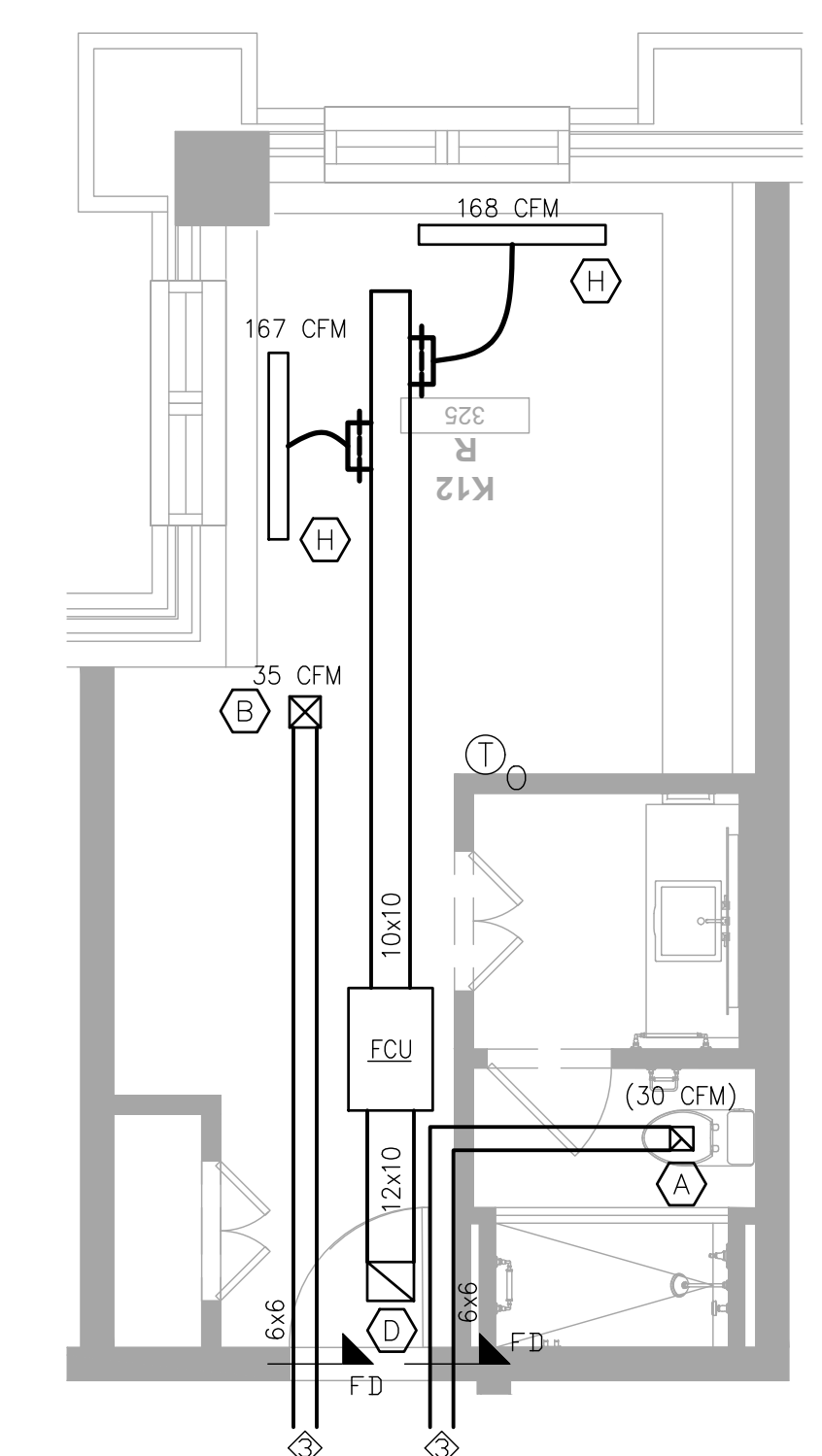
**3 K07R Typical Guestroom Plan**  
 SCALE: 1/4" = 1'-0"



**4 K09R Typical Guestroom Plan**  
 SCALE: 1/4" = 1'-0"



**5 K10L Typical Guestroom Plan**  
 SCALE: 1/4" = 1'-0"



**6 K12R Typical Guestroom Plan**  
 SCALE: 1/4" = 1'-0"

| HVAC SYMBOLS |   |
|--------------|---|
|              | SUPPLY GRILLE                               |
|              | RETURN GRILLE                               |
|              | EXHAUST FAN                                 |
|              | SPIN-IN                                     |
|              | EXISTING DUCTWORK                           |
|              | NEW DUCTWORK                                |
|              | FLEX DUCTWORK                               |
|              | TEMPERATURE SENSOR                          |
|              | CO2 SENSOR                                  |
|              | PROGRAMMABLE THERMOSTAT                     |
|              | PROGRAMMABLE THERMOSTAT W/ OCCUPANCY SENSOR |
|              | VOLUME DAMPER                               |
|              | FIRE DAMPER                                 |
|              | FIRE-SMOKE DAMPER                           |
|              | SIDEWALL AIR SUPPLY GRILLES                 |
|              | SIDEWALL AIR TRANSFER GRILLES               |

- MECHANICAL NOTES**
- FIELD VERIFY EXISTING LAYOUT.
  - EXISTING EQUIPMENT, DUCTWORK, AND GRILLES CAN BE REUSED IF THEY ARE IN GOOD WORKING CONDITION AND SATISFY THE MINIMUM AIRFLOW REQUIREMENTS.
  - THE TERMINATION POINT OF EXHAUST OUTLETS AND DUCTS FOR ALL ENVIRONMENTAL AIR EXHAUST SYSTEMS DISCHARGING TO THE OUTDOORS SHALL BE LOCATED A MINIMUM OF 3' FROM PROPERTY LINES, 3' FROM OPERABLE OPENINGS INTO BUILDINGS, AND 10' FROM MECHANICAL AIR INTAKES.
  - COORDINATE FINAL LOCATION OF ALL THERMOSTATS AND SENSORS WITH ARCHITECT AND OWNER.
  - ALL EXPOSED DUCTWORK SHALL BE DOUBLE WALL INSULATED GALVANIZED SHEET METAL.
  - PROVIDE FIRE DAMPERS (FD) IN ALL FIRE RATED WALLS, SMOKE DAMPERS (SD) IN ALL SMOKE RATED WALLS, AND FIRE-SMOKE DAMPERS (FSD) IN ALL FIRE-SMOKE RATED WALLS AS IDENTIFIED ON ARCHITECTURAL DRAWINGS. THE RATINGS OF THE FIRE DAMPERS, SMOKE DAMPERS, AND FIRE-SMOKE DAMPERS SHALL MEET OR EXCEED THE RATING OF THE WALL IN WHICH IT IS INSTALLED.
  - COORDINATE LOCATIONS OF ALL GRILLES WITH THE FRAMING CONTRACTOR.
  - CONTRACTOR SHALL FIELD VERIFY SPACE REQUIREMENTS FOR DUCTWORK PRIOR TO MANUFACTURING. ADJUSTMENTS TO DUCT SIZES IS ACCEPTABLE AS LONG AS THE FOLLOWING FRICTION FACTORS ARE MAINTAINED:
    - SUPPLY: 0.08"/100FT.
    - RETURN: 0.06"/100FT.
    - ASPECT RATIO: LESS THAN 3 TO 1 WITHOUT CONCURRENCE WITH THE ENGINEER.

- MECHANICAL KEYED NOTES:**
- FAN COIL UNIT TO BE MOUNTED ABOVE THE DOOR.
  - SEE TYPICAL GUESTROOM PLAN(S) FOR CONTINUATION AND SIZING OF DUCTWORK.
  - SEE OVERALL FLOOR PLAN(S) FOR CONTINUATION AND SIZING OF DUCTWORK.
  - COVER OPEN ENDED DUCT WITH WIRE MESH.